



Vision for the Landscape

Our Vision

The South West Peak is a life-support system because it: collects our water, takes in our carbon, defines our communities, retains our heritage, provides an escape, promotes health & wellbeing, inspires generations and supports livelihoods.

Our partnership supports a South West Peak that is: a healthier and better functioning landscape for people and wildlife, a nationally and internationally recognised place where everyone can make a true connection with their environment and a living landscape where opportunities exist for present and future generations.

Mission Statement

By working together in the South West Peak, we will shape a better future for our communities, landscape, wildlife and heritage where trust and understanding thrive.

Partnership Outcomes

The key outcomes which this partnership wishes to see are divided into four categories: outcomes for relationships, land management, people, and landscape character:

Relationships

- R1. Improved understanding and relationship between different communities (farmers, conservationists, residents, visitors, partners)

Land Management

- LM1. Habitats are more diverse and more resilient
- LM2. Populations of key species are supported and more resilient
- LM3. A move towards economically and environmentally sustainable land management or 'high nature value farming'
- LM4. The landscape is managed for multiple benefits

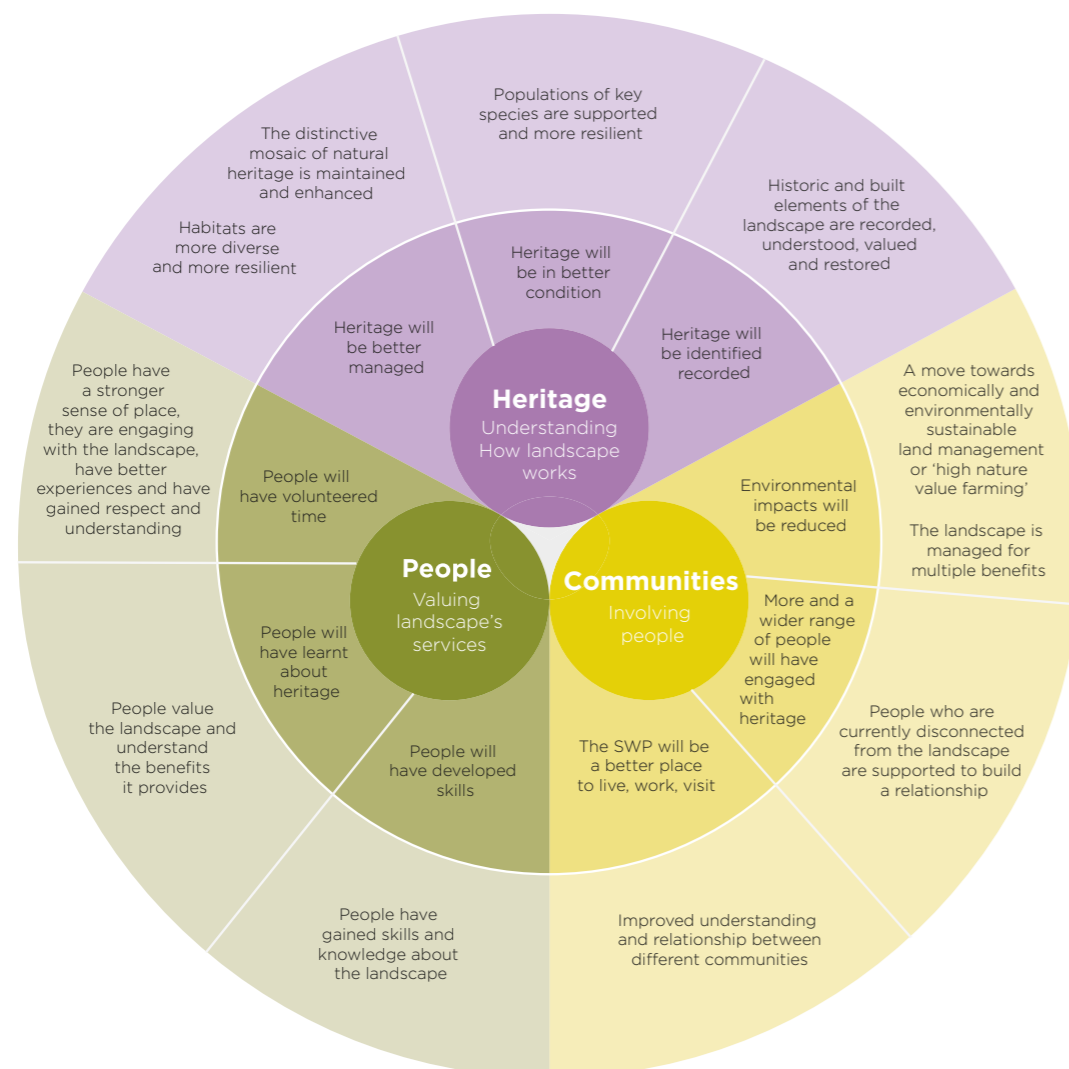
People

- P1. People have a stronger sense of place, they are engaging with the landscape, have better experiences, and have gained respect and understanding
- P2. People have gained skills and knowledge about the landscape
- P3. People value the landscape and understand the benefits it provides
- P4. People who are currently disconnected from the landscape are supported to build a relationship

Landscape Character

- LC1. Historic and built elements of the landscape are recorded, understood, valued and restored
- LC2. The distinctive mosaic of natural heritage is maintained and enhanced

Our eleven partnership outcomes fit well with the nine HLF outcomes and sit within the ecosystem approach of understanding how landscape works, valuing landscape's services and involving people. As shown in the diagram below.



Statement of Intent

The South West Peak is a landscape at a crossroads. This is where north meets south, and the uplands and lowlands sit side by side. The resulting climate is a key influencer of the distinctive character of the landscape we experience today including its land use and field pattern, industry, settlement pattern and local vernacular, recreational opportunities, geodiversity and biodiversity. This is a landscape characterised by dramatic rocky outcrops overlooking an intimate mosaic of moorland, grassland, wetland and woodland, divided by dry stone walls or hedgerows.

At a crossroads a traveller often needs to take stock and make decisions: where am I heading, how will I get there, which is the best direction to take? The decisions we make today are important determinants of the future shape, condition and direction of this natural, cultural and economic landscape.

The Landscape Partnership focuses on understanding, strengthening and enhancing the connections between the natural environment, the historic settlement patterns and land-based industries, the present day use and enjoyment of the landscape, and the future resilience to change of this special part of the Peak District.

In particular the Landscape Partnership will help people to:

- Understand and implement an ecosystem approach to caring for the landscape.
- Understand the historic and cultural value of the local landscape and how it has been shaped over time.
- Conserve, manage and enhance the built and natural features that characterise the area.
- Deliver a sustainable land management approach capable of supporting current land uses whilst protecting the existing network of habitats and enhancing landscape character.
- Take action to protect the local environment, increase biodiversity and enhance, restore and create a network of diverse habitats which will help to ensure future resilience to change.
- Build skills in areas like traditional building and land management; access and interpretation; wildlife surveying, monitoring and habitat restoration; and community planning.
- Engage in learning, training and gaining skills to understand, interpret and care for their local landscape, traditions and heritage.

- Explore and deliver innovative ways of supporting local businesses which depend upon and benefit the natural and cultural environment.
- Follow an approach that protects and manages the distinctive dispersed settlement, field patterns and other intrinsic characteristics which combine to contribute to a distinctive sense of place.
- Address the decline of key priority species such as farmland waders.
- Get involved in telling and sharing stories about the area - its past, present and future; and supporting residents to become custodians of their landscape.
- Engage on a deeper, more meaningful level in and around the South West Peak to help strengthen local connection and involvement with heritage assets and historic culture of the area.
- Promote opportunities for cooperation and volunteering within the community to develop approaches and action so that the benefits of partnership working can be sustained long term.

Our Landscape Partnership Scheme will deliver 18 integrated projects across the landscape to address some of the issues in the area. Strong coordinated communication and engagement is required to build relationships and work with dispersed and disparate communities. Our range of partners, well recognised in the area, bring a range of individual skills and strengths, which when harnessed and working effectively together will achieve even more in partnership.



Legacy

Legacy

The Partnership hopes to deliver a number of legacies from this Scheme; there will be legacies for the place, for the people and communities and for the partners. The legacies will build on the measures of success in our Monitoring and Evaluation framework.

Our eleven partnership outcomes for relationships, land management, people and landscape character hold true for the delivery phase and beyond. Central to the success of the Partnership and the Scheme will be building better relationships. Only if we improve relationships between farmers and conservationists, between residents and visitors and between the landscape users and the landscape managers can we deliver successful projects and achieve a legacy.

Legacy	How it might be sustained
Relationships Improved understanding and relationship between different communities	<ul style="list-style-type: none"> Mutual understanding will increase collaborative working. Continuation of Farm Link Worker role if successful.
Land Management Habitats are more diverse and more resilient	<ul style="list-style-type: none"> Landowners enter into ten year management agreements. Slowing the Flow measures continue to improve water quality and reduce downstream flooding.
Populations of key species are supported and more resilient	<ul style="list-style-type: none"> Better understanding of species requirements will inform long term management schemes and targeting of funding. Management at a landscape scale will support sustainable metapopulations.
A move towards economically and environmentally sustainable land management or 'high nature value farming'	<ul style="list-style-type: none"> Management plans guide ongoing care and maintenance for locations where capital improvements have taken place. Groups of farmers working more collaboratively to manage land and deliver ecosystem services.
The landscape is managed for multiple benefits	<ul style="list-style-type: none"> Payment for Ecosystem Services schemes explored and trialled.
People People have a stronger sense of place, they are engaging with the landscape, have better experiences, and have gained respect and understanding	<ul style="list-style-type: none"> New community groups nurtured through the Scheme continue to deliver local priority projects. Families will be empowered to explore and enjoy nature on their own. The South West Peak will finally have its own identity.

People cont...

People have gained skills and knowledge about the landscape

- Ongoing volunteering opportunities and site maintenance tasks enabling newly skilled volunteers to continue to participate.
- Partners provide ongoing support to trained volunteers.
- Schools maintain links with PDNPA Learning & Discovery team for ongoing field studies and projects.

People value the landscape and understand the benefits it provides

- Visitors to sites willing to donate to their upkeep, funds raised put back into ongoing management and maintenance.

People who are currently disconnected from the landscape are supported to build a relationship

- New easy access routes will be maintained by landowners, rangers, rights of way officers.
- New Mosaic champions join Peak District Mosaic and continue to support new audiences to visit and enjoy the landscape.

Landscape Character

Historic and built elements of the landscape are recorded, understood, valued and restored

- Records are shared with national and county recording schemes and made available on the partnership's 'Virtual Visitor Centre' website.
- Heritage adoption scheme continues to be run either by lead partner or as separate trust.

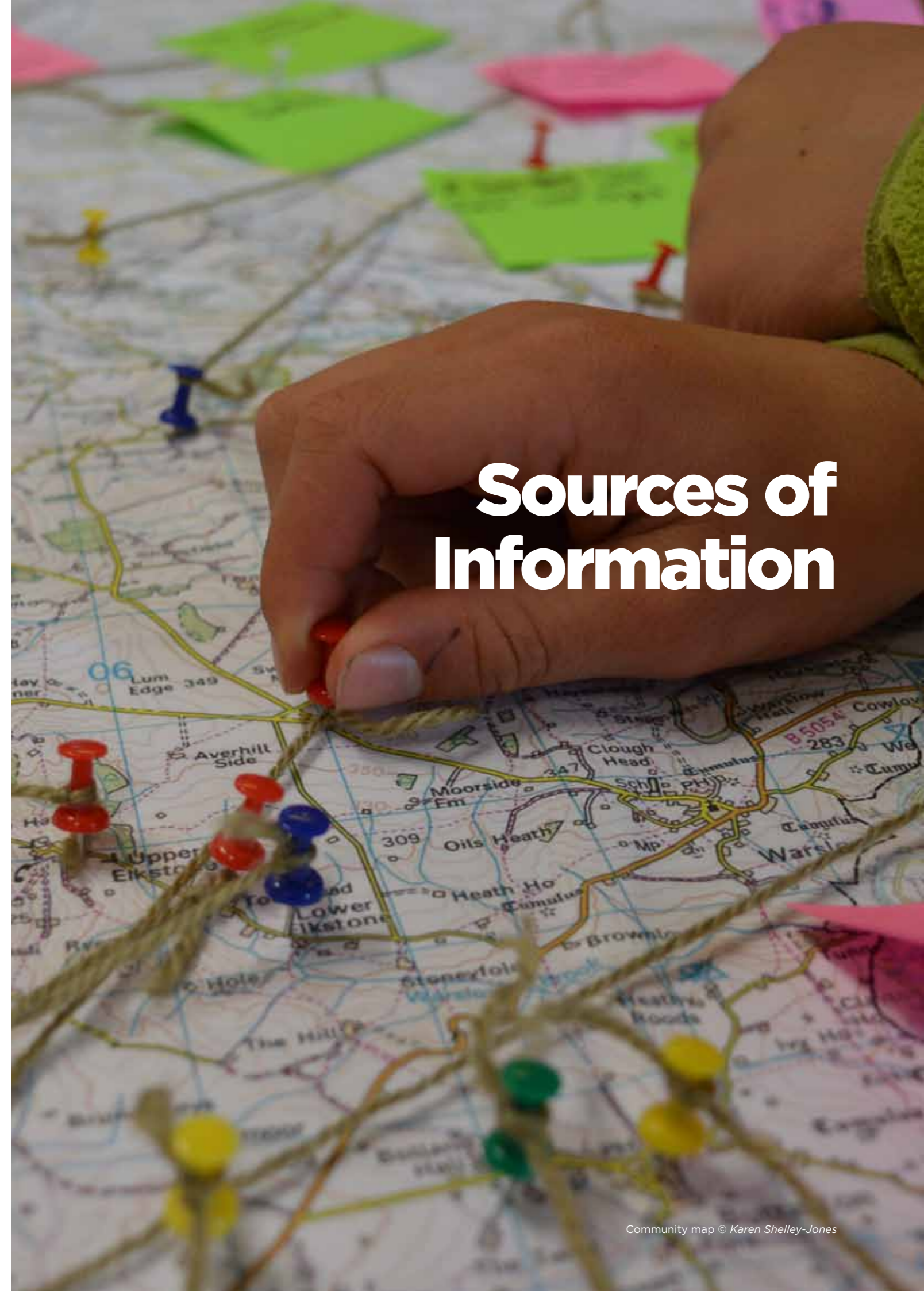
The distinctive mosaic of natural heritage is maintained and enhanced

- Landowners enter into ten year management agreements.
- Evidence gathered will feed into development of agricultural support systems.

The Partners

The partnership will be strong and continue beyond the HLF funding

- The benefits of effective partnership working will be monitored and evaluated to provide evidence for the effectiveness of the approach.
- Achievements of the partnership will be promoted and provide opportunities for further funding.



Sources of Information

- Barnatt, J. (2014). Coal Mining near Buxton: Thatch Marsh, Orchard Common and Goyt's Moss. *Mining History* Vol 19, No. 2, 17-107.
- Bell, D. (2005). *Staffordshire Tales of Murder & Mystery*. Countryside Books.
- Beresford, R. (2015). *1951 Estate Sale*. Retrieved 2015, from Hollinsclough: <http://www.hollinsclough.org.uk/1951.htm>
- Bonson, T. (2003). *Driven by the Dane: Nine centuries of waterpower in South Cheshire and North Staffordshire*. Congleton: The Midland Wind and Water Mills Group.
- Broadhurst, F. (1994). *Geological Visit to Lyme Park*. Cheshire RIGS group.
- Brook Lyndhurst. (2015). *Future Farmscapes - a report for the South West Peak Landscape Partnership*. Unpublished report.
- Cheshire Now. (2006). *Lamaload Reservoir*. Retrieved from The guide to Cheshire, Derbyshire, Lancashire and the Wirral: http://www.cheshirenow.co.uk/lamaload_reservoir.html
- City Population. (2016). *Macclesfield (Cheshire East)*. Retrieved from City Population: <http://www.citypopulation.de/php/uk-england-northwestengland.php?cityid=E35000590>
- Clarke, D. (1991). *Ghosts and Legends of the Peak District*. Norwich: Jarrold Publishing.
- Cooper, A. (1999). *Archaeology walks in the Peak District*. Wilmslow: Sigma Leisure.
- Council of Europe. (2000). Retrieved 2016, from European Landscape Convention: <http://coe.int/en/web/landscape>
- David. (2016). *The John Turner Stone*. Retrieved from The Goyt Valley: <http://goyt-valley.org.uk/john-turner-stone/>
- DEFRA. (2005). *South West Peak ESA*. Retrieved from National archives: <http://webarchive.nationalarchives.gov.uk/20070402085841/http://defra.gov.uk/erdp/docs/national/annexes/annex/swpeak2.htm>
- Derbyshire Chamber of Commerce. (2005). *Survey of Businesses in the Peak District and Rural Action Zone*. Chesterfield: Derbyshire Chamber of Commerce.
- Derbyshire County Council. (2016). *Greenways*. Retrieved from Derbyshire County Council: <http://www.derbyshire.gov.uk/leisure/countryside/access/greenways/default.asp>
- Derbyshire Heritage. (2016). *Derbyshire Heritage*. Retrieved from Derbyshire Mills index: <http://www.derbyshireheritage.co.uk/Menu/Archaeology/Mills.php>
- Discover Derbyshire and the Peak District. (2016). *Goyt Valley Feature*. Retrieved from Discover Derbyshire and the Peak District: <http://www.derbyshire-peakdistrict.co.uk/goytvalley.htm>
- Discover Derbyshire and the Peak District. (2016). *Goyt Valley Walk*. Retrieved from Discover Derbyshire and the Peak District: <http://www.derbyshire-peakdistrict.co.uk/goytvalleywalk.htm>
- Dodd, A., & Dodd, E. (1974). *Peakland Roads and Trackways*. Ashbourne: Moorland Publishing Co Ltd.
- Dodgson, J. M. (1970). *The place-names of Cheshire part 1*. Cambridge: Cambridge University Press.
- Evans, R., & Potts, S. (2013). *Iconic Bees: North East. Bilberry Bumblebee*. Retrieved from Friends of the Earth: https://www.foe.co.uk/sites/default/files/downloads/bees_north_east.pdf
- Forestry Commission. (2016). *Chalara dieback of ash*. Retrieved from Forestry Commission: <http://www.forestry.gov.uk/ashdieback#Distribution>
- Furness Vale Local History Society. (2015, July 10). *Furness Vale Local History Society*. Retrieved from Furness Blogspot: <http://furnesshistory.blogspot.co.uk/2015/07/kettleshulme-candle-wick-mill.html#more>
- Gannon, P. (2010). *Rock Trails Peak District: a hillwalker's guide to the geology and scenery*. Pesda Press Ltd.
- Higgins, J. (2001). *Leek and The Roaches*. Hawksworth Graphics and Print.
- High Peak Borough Council. (2015). *Profile of main areas*. Retrieved from <http://www.highpeak.gov.uk/hp/council-services/profile-of-the-main-areas/buxton>
- Historic England. (2016). *Danebower Colliery Ventilation Chimney*. Retrieved from Historic England Scheduled Monuments: <https://www.historicengland.org.uk/listing/the-list/list-entry/1018820>
- Historic England. (2016). *Lyme Park*. Retrieved from Historic England: <https://www.historicengland.org.uk/listing/the-list/list-entry/1000642>
- Historic England. (2016). *Mellor's Gardens*. Retrieved from Historic England:

- <https://www.historicengland.org.uk/listing/the-list/list-entry/1001284>
- Historic England. (2016). *Pavilion Gardens, Buxton*. Retrieved from Historic England: <https://www.historicengland.org.uk/listing/the-list/list-entry/1000675>
- Historic England. (2016). *Pilsbury Castle Hills motte and bailey castle*. Retrieved from Historic England: <https://historicengland.org.uk/listing/the-list/list-entry/1011199>
- Horovitz, D. (2005). *The place-names of Staffordshire*. Stafford: David Horovitz.
- IUCN. (2016). *Global protected areas programme*. Retrieved 2016, from http://www.iucn.org/about/work/programmes/gpap_home/gpap_quality/gpap_pacategories/gpap_pacategory2/
- James, L. (2016, March 29). *Top 100 businesses - Staffordshire Moorlands: Investment sparks grand designs for great growth*. Retrieved from Stoke Sentinel: <http://www.stokesentinel.co.uk/100-businesses-Investment-sparks-grand-designs/story-29011485-detail/story.html>
- JNCC. (2016). *Guidelines for selection of biological SSSIs*. Retrieved from JNCC: <http://jncc.defra.gov.uk/page-2303>
- Leek Town Council. (2016). Retrieved from Leek Town Council: <http://www.leektowncouncil.gov.uk/>
- Longden, G. (1988). *The Industrial Revolution in East Cheshire*, Macclesfield and Vale Royal. Bollington: Groundwork Trust.
- Manchester, S., & Glaves, D. (2009). *The condition of selected Environmentally Sensitive Area (ESA) semi-natural grassland stands: Avon Valley, Blackdown Hills, Shropshire Hills, Somerset Levels & Moors, South West Peak and Upper Thames Tributaries ESAs*. Cambridge: Centre for Ecology & Hydrology.
- Manchester, S., Carey, P., & Pywell, R. (2005). *Botanical resurvey of enclosed rough grassland in the Shropshire Hills, Blackdown Hills and South West Peak ESAs*. Cambridge: Centre for Ecology & Hydrology.
- Mondrem. (2016). *Myths and Curiosities from Cheshire, Derbyshire and Staffordshire*. Retrieved from Mondrem: <http://mondrem.net/index.html>
- Moors for the Future. (2012). *Bilberry Bumblebee*. Retrieved from Moors for the Future Community Science: <http://www.moorsforthefuture.org.uk/community-science/bilberry-bumblebee>
- Morley, D. (2016). Opinion: New Countryside Stewardship scheme doesn't really work for the uplands. Retrieved from *Foundation for Common Land*: <http://www.foundationforcommonland.org.uk/news/493-opinion-new-countryside-stewardship-scheme-doesnt-really-work-for-the-uplands>
- National Trust. (2010). *Archive for the Calke Abbey category*. Retrieved from Treasure Hunt National Trust Collections: <https://nttreasurehunt.wordpress.com/category/calke-abbey/>
- Natural England. (2013). *National Character Area profile: 53 South West Peak*.
- Natural England. (2015). *Countryside Stewardship Manual*. Natural England.
- Natural England. (2015). *Monitor of Engagement with the Natural Environment: annual report from the 2013-14 survey*. Peterborough: Natural England.
- Office for National Statistics. (2015). Neighbourhood statistics. Retrieved from <http://www.neighbourhood.statistics.gov.uk/dissemination/>
- Pates, R. (2015). *Staffordshire Rural Economy Evidence Base: final report. SQW*.
- PDNPA. (2008). *South West Peak Landscape Character Assessment*.
- PDNPA. (2008b). *South West Peak Landscape Strategy*.
- PDNPA. (2013). *State of the Park Report*. Retrieved from State of the Park Report: <http://www.peakdistrict.gov.uk/microsites/sopr/overview>
- Peak District Information. (2015). *Tittesworth Reservoir*. Retrieved from Peak District Information: <http://www.peakdistrictinformation.com/visits/tittesworth.php>
- Peak District National Park. (2012). *National park management plan*. Retrieved from <http://www.peakdistrict.gov.uk/microsites/npmp>
- Porter, J. (2014). *The Ecosystem Approach Handbook*. Manchester: Countryside.

Sources of Information

- Raven, M. (2004). *A Guide to Staffordshire and the Black Country*. Michael Raven.
- Rouquette, J., & Holt, A. (2016). *Landscape Opportunity and Ecosystem Services Mapping in the South West Peak. Report for the South West Peak Landscape Partnership Scheme*. Natural Capital Solutions.
- Shelley-Jones, K. (2015). *South West Peak Community Roadshows*. Unpublished
- Spriggs, P. (2013). *Building the momentum for a landscape partnership project in the South West Peak - workshop report*.
- Steward, D. (1987). *Lud's Church RIGS citation*. Staffordshire RIGs group.
- Stoke City Council. (2016). *City Profile*. Retrieved from City of Stoke-on-Trent: <http://www.stoke.gov.uk/ccm/navigation/council-and-democracy/city-profile/>
- Syson-Nibbs, L. (2001). *Farm out health project - a participatory health needs assessment of the local agricultural community. Bakewell: High Peak and Dales NHS Primary Care Trust*.
- Telltale. (2016). *Interpretation Plan for the South West Peak HLF Landscape Partnership Scheme*. Unpublished.
- The Guardian. (2006). *The Guardian Books*. Retrieved from The Guardian: <https://www.theguardian.com/books/2006/dec/16/poetry.simonarmitage>
- The Heather Trust. (2014). *Heather Beetle*. Retrieved from The Heather Trust: <http://www.heathertrust.co.uk/#!heather-beetle/c58r>
- Trent Rivers Trust. (2016). *Tittesworth Catchment Project*. Retrieved from Trent Rivers Trust: <http://www.trentriverstrust.org/site/tittesworth>
- UNESCO. (2016). *What is intangible cultural heritage*. Retrieved from UNESCO: <http://www.unesco.org/culture/ich/en/what-is-intangible-heritage-00003>
- University of Hertfordshire. (2011). Retrieved from everysite: <http://adlib.everysite.co.uk/adlib/defra/content.aspx?id=000IL3890W.16NTBX3DS2G108>
- University of Hertfordshire. (2011). *Special environmental sites and schemes*. Retrieved from Everysite.co.uk: <http://adlib.everysite.co.uk/adlib/defra/content.aspx?id=000IL3890W.10NTBX2QC41ZZ>
- Visit Peak District. (2016). *Fernilee Reservoir*. Retrieved from Visit Peak District & Derbyshire: <http://www.visitpeakdistrict.com/Buxton-Fernilee-Reservoir/details/?dms=3&venue=6123304>
- Wikipedia. (2016). *Harpur-Crewe baronets*. Retrieved from Wikipedia: https://en.wikipedia.org/wiki/Harpur-Crewe_baronets
- Wincle. (2016). *Mills on the Dane*. Retrieved from http://www.wincle.org.uk/history_mill.html
- Wood, E. (2007). *The South West Peak: History of the Landscape*. Ashbourne: Landmark Publishing Ltd.
- Woods, F. (1982). *Legends and Traditions of Cheshire*. Shiva Publishing Ltd.